

# NETWRIX DISK SPACE MONITOR QUICK-START GUIDE

Product Version: 1.2

October 2014

**Legal Notice**

The information in this publication is furnished for information use only, and does not constitute a commitment from Netwrix Corporation of any features or functions, as this publication may describe features or functionality not applicable to the product release or version you are using. Netwrix makes no representations or warranties about the Software beyond what is provided in the License Agreement. Netwrix Corporation assumes no responsibility or liability for the accuracy of the information presented, which is subject to change without notice. If you believe there is an error in this publication, please report it to us in writing.

Netwrix is a registered trademark of Netwrix Corporation. The Netwrix logo and all other Netwrix product or service names and slogans are registered trademarks or trademarks of Netwrix Corporation. Active Directory is a trademark of Microsoft Corporation. All other trademarks and registered trademarks are property of their respective owners.

**Disclaimers**

This document may contain information regarding the use and installation of non-Netwrix products. Please note that this information is provided as a courtesy to assist you. While Netwrix tries to ensure that this information accurately reflects the information provided by the supplier, please refer to the materials provided with any non-Netwrix product and contact the supplier for confirmation. Netwrix Corporation assumes no responsibility or liability for incorrect or incomplete information provided about non-Netwrix products.

© 2014 Netwrix Corporation.

All rights reserved.

# TABLE OF CONTENTS

<b>1. INTRODUCTION .....</b>	<b>4</b>
1.1. Overview .....	4
1.2. How This Guide is Organized .....	4
<b>2. PRODUCT OVERVIEW .....</b>	<b>5</b>
2.1. Key Features and Benefits .....	5
2.2. Product Architecture .....	5
2.3. Licensing Information .....	5
<b>3. INSTALLING NETWRIX DISK SPACE MONITOR .....</b>	<b>6</b>
3.1. Installation Prerequisites .....	6
3.1.1..Hardware Requirements .....	6
3.1.2..Software Requirements .....	6
3.2. Installing Netwrix Disk Space Monitor.....	6
<b>4. CONFIGURING DISK SPACE MONITORING .....</b>	<b>7</b>
<b>5. VIEWING REPORTS .....</b>	<b>10</b>
<b>6. APPENDIX .....</b>	<b>11</b>
6.1. Appendix A Troubleshooting .....	11
6.2. Appendix B Advanced Options.....	11

# 1. INTRODUCTION

## 1.1. Overview

This guide is intended for first-time users of Netwrix Disk Space Monitor. It contains an overview of the product functionality, instructions on how to install and setup the product, and explains how to start using Netwrix Disk Space Monitor by providing step-by-step procedures for some basic operations.

This guide can be used for evaluation purposes, therefore, it is recommended to read it sequentially, and follow the instructions in the order they are provided. After reading this guide, you will be able to:

- Install Netwrix Disk Space Monitor
- Monitor disk space
- Set email notifications

## 1.2. How This Guide is Organized

This section explains how this guide is organized and provides a brief overview of each chapter.

- Chapter [1 Introduction](#): the current chapter. It explains the purpose of this document, defines its audience and explains its structure.
- Chapter [2 Product Overview](#) provides an overview of the product features, and explains the system's architecture and deployment structure. It also contains information on licensing.
- Chapter [3 Installing Netwrix](#) provides instructions on the installation of Netwrix Disk Space Monitor.
- Chapter [4 Configuring Disk Space Monitoring](#) contains an overview of the configuration options available through the Disk Space Monitor console.
- Chapter [5 Viewing Reports](#) explains how to generate and view reports on disk space availability.
- [Appendix](#) provides troubleshooting information and advanced options descriptions.

## 2. PRODUCT OVERVIEW

### 2.1. Key Features and Benefits

Server disk space is a critical resource that must be closely monitored to prevent potential server down time and failures. Netwrix Disk Space Monitor allows keeping track of server disk space on workstations, domain controllers, file servers, SharePoint servers, Exchange servers, database servers, and others. The product monitors free disk space on the specified servers and sends daily reports and alerts about low disk space conditions based on configured thresholds.

### 2.2. Product Architecture

Netwrix Disk Space Monitor consists of a single console. The space monitoring runs as a scheduled task on the workstation where the product is installed.

### 2.3. Licensing Information

Netwrix Disk Space Monitor is a non-expiring freeware product.

## 3. INSTALLING NETWRIX DISK SPACE MONITOR

This chapter guides you through the installation process of Netwrix Disk Space Monitor.

### 3.1. Installation Prerequisites

#### 3.1.1. Hardware Requirements

Before installing Netwrix Disk Space Monitor, make sure that your system meets the following minimum hardware requirements:

- Minimum 5 Mbytes of free hard disk space
- Minimum 256 Mbytes of RAM
- Minimum Intel or AMD 32-bit 2 GHz

#### 3.1.2. Software Requirements

Make sure that the following software has been installed on the corresponding machines before proceeding with the installation.

- Operating System: Windows XP SP3 or above
- .NET Framework 2.0, 3.0 or 3.5
- Internet Explorer 7.0 or above

### 3.2. Installing Netwrix Disk Space Monitor

#### Procedure 1. To install Netwrix Disk Space Monitor

1. Run dsmfull\_setup.msi on a member server or a workstation.
2. Follow the instructions of the wizard to complete the installation.

## 4. CONFIGURING DISK SPACE MONITORING

This chapter provides an overview of the configuration options available through the Netwrix Disk Space Monitor console.

After the installation is complete, start Netwrix Disk Space Monitor by clicking **Start → All Programs → Netwrix → Disk Space Monitor**.

Figure 1: Disk Space Monitor console

NetWrix Disk Space Monitor

Monitors servers free disk space and delivers detailed information on a daily basis or in realtime.

☒ Enable Disk Space Monitor

Servers to monitor free disk space on:

Server Name		
enterpriseDC.enterprise.local		
workstation6.enterprise.local		

Add... Remove Import...

Notify if free disk space falls below: ☒ 10 percent ☐ 12 Mbytes

☐ Send notifications in realtime

Notification delivery schedule: Change...

E-mail Notification Delivery Settings

Send notifications to: administrator@enterprise.local

☐ Send detailed report to:

SMTP server: enterprise.local Port: 25

From address: administrator@enterprise.loc Verify

Generate a detailed report for the listed servers: Generate...

Apply Close

### Procedure 2. To configure monitored servers list

1. Select the **Enable Disk Space Monitor** checkbox.
2. Create a list of servers to be monitored. Click **Add** to add a new monitored location to the list. Use the following path formats as specified in [Table 1: Path format conventions](#).

**Note:** You can create a list of servers you want to monitor, save it as a \*.txt file and import it to Netwrix Disk Space Monitor.

Table 1: Path format conventions

To monitor	Use the following path format
Entire server	myserver
UNC Path	\\myserver\public
Individual drive	myserver\c:
Mount point	myserver\c:\foldername\mount_point_name

- Set the threshold that triggers notifications. It can be defined in MB of free space or percentage of available space.

### Procedure 3. To configure email notifications

- Select one of the following delivery options:
  - Select **Send email notifications in real-time** if you want to receive them immediately when the threshold is reached. In this case the data collection task runs every 10 minutes.
  - Leave **Send email notifications in real-time** blank to receive email notifications according to schedule. By default, the notification emails are delivered daily (3:00 AM).

**Note:** You cannot change the delivery schedule until you save configuration for the first time. To reschedule delivery, select **Change** and update the timetable. You can also update it using Windows Task Scheduler.

- Specify comma-separated addresses where notifications must be sent. You can also select **Send detailed report to** to enable detailed reports.
- Specify the SMTP server name and port number.

**Note:** For the system to function properly, Anonymous Authorization must be enabled in your SMTP server settings.

- Enter the address that notifications will be sent from.
- Click **Verify** to ensure that the email is successfully delivered.

### Procedure 4. To save current configuration

- Click **Apply** to save the current configuration.
- Specify the account to be used for data collection. Make sure that the specified account belongs to Local Administrators on all servers where data will be collected.



*Figure 2: Specifying an account for data collection*

**Scheduled Task Credentials**

Please specify an account to collect your servers free disk space information. The data collection will be scheduled under this account.

Account name:   
e.g.: "DOMAIN\Administrator" or local user name

Password:

Confirm password:

**The account must have sufficient administrative privileges on the remote servers to monitor the running services.**

OK Cancel

## 5. VIEWING REPORTS

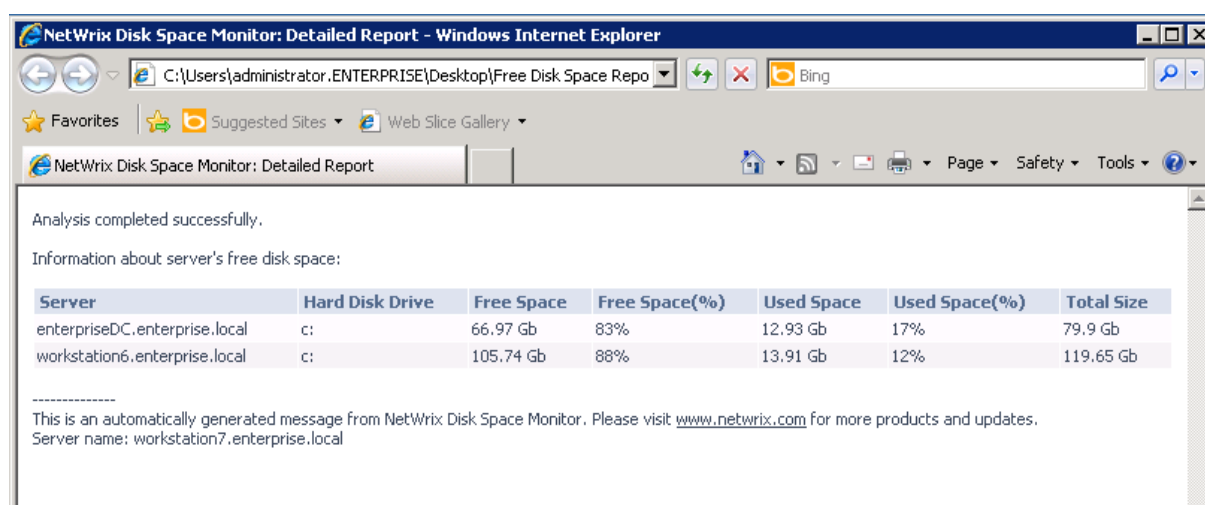
This chapter describes how to generate and view reports. To receive a report select one on the following:

- In Netwrix Disk Space Monitor console click **Generate** to build a new report. You will be prompted to save it as \*.html on your disk.
- Set email notification options as described in [Procedure 3 To configure email notifications](#). The reports are delivered to the specified recipient.

### Procedure 5. To view reports

1. Navigate to the report and open it.
2. Review the report details.

#### 3. Report



## 6. APPENDIX

### 6.1. Appendix A Troubleshooting

Table 2: Troubleshooting

Case	Solution
The following error may occur: <i>"Failed to obtain *server* information. The node you are trying to scan can be a Filer or a node which you don't have administrative privileges. Please use the UNC convention to scan the shared folder in the server".</i>	To resolve this error check WMI permissions for this server, by connecting to the server using Computer Management snap-in and navigating to the WMI Control node (under Services and Application).

### 6.2. Appendix B Advanced Options

To exclude specific drive letters or mount points on all servers from being monitored add them to `omitdrivelist.txt` in the Netwrix Disk Space Monitor installation folder.